



# Master of science in Mobility Management

This Master's programme in Mobility Management combines the disciplines of transport economics, transport policy and planning, mobility engineering, spatial planning and urban environment into a single study programme. It is accredited by the Conférence des grandes Écoles (CGE) and complies with the quality requirements to guarantee a successful professional integration.



///

## Contact

Isabel Cunha, Head of the MSc in Mobility Management  
E-mail : [isabel.cunha@entpe.fr](mailto:isabel.cunha@entpe.fr)

>> **Contact request**



# Objectives

The programme aims to foster international academic and professional exchanges through a multidisciplinary approach focused on global environmental, societal, and technological challenges. Students will develop advanced skills in **transport planning, data analysis, and mobility management, acquiring managerial and technical expertise to shape transport systems, policies and regulations.**

## /// Structure and curriculum

The first and second semesters are dedicated to the core modules and seminars.

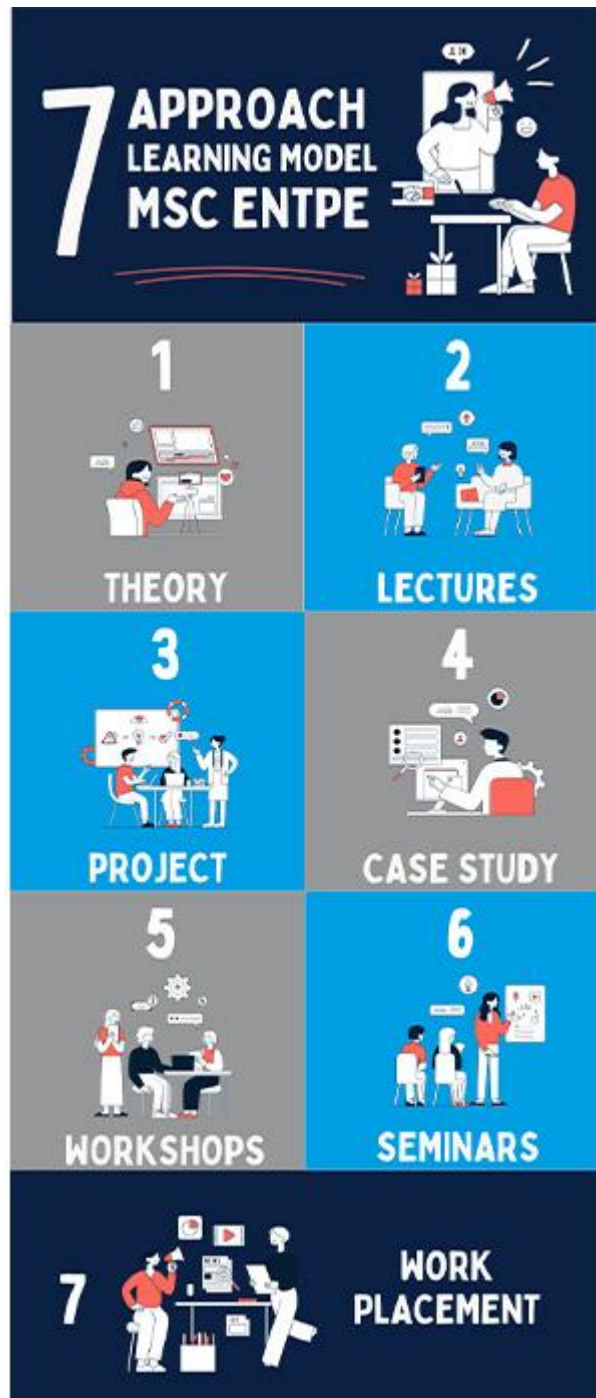
From the mid-second semester onward, students will gain professional experience in a recognised company and develop a master's dissertation.

The ENTPE MSc in Mobility Management is a one-year, full-time English-taught programme comprising 60 ECTS, divided into two semesters. The curriculum combines 40 ECTS of teaching modules and 20 ECTS for the master dissertation and work placement.

### >> Learning Model

1. Theory based-learning
2. Face-to-face lectures
3. Project-based approach
4. Case-studies
5. Workshops
6. Seminars
7. Work placement

Using different learning methods will keep students engaged and motivated as they are



exposed to other ways of thinking and problem-solving. Such an approach is well-aligned with student's interests and career goals, making the pathway relevant and fulfilling.

# Modules

## >> Semester 1

- Mobility Management (4,0 ECTS)
- Land-Use and Transport Planning (3,5 ECTS)
- Design of Dedicated AV-based Services (2,5 ECTS)
- Transport Data and Machine Learning (3,0 ECTS)
- Urban Logistics (3,0 ECTS)
- Mobility Modelling (2,5 ECTS)
- Spatial Analysis (3,0 ECTS)
- Research Seminar (3,5 ECTS)

## >> Semester 2

- Sustainable Urban Mobility Plans (4,0 ECTS)
- Environmental Impacts of Transport Systems (2,5 ECTS)
- Mobility Management II (2,5 ECTS)
- Transition Towards Sustainable Mobility (2,5 ECTS)
- Research Seminar (3,5 ECTS)
- Master Dissertation (10,0 ECTS)
- Work Placement (10,0 ECTS)

**i**For more information about the curriculum, contact : [isabel.cunha@entpe.fr](mailto:isabel.cunha@entpe.fr)

---

# Teaching

Experts from academia, research institutes and industry will share their expertise and knowledge through lectures and seminars. The list below presents those

responsible for each module in alphabetical order.



Dr. Christine Buisson, Top-grade Researcher (HDR) at ENTPE and at Gustave Eiffel University - LICIT ECO-7 Lab - Transport and Traffic Engineering Laboratory.  
Topics: Traffic Engineering, Traffic Safety, Intelligent Transportation Systems, Transportation Traffic Control.



Dr. Louafi Bouzouina, Full professor (HDR) at ENTPE and Research Director at LAET - Transport Urban Planning Economics Laboratory, ENTPE, CNRS, University of Lyon.  
Topics: Urban Growth, Daily Mobility, Accessibility, Urban Segregation, Deprived Neighbourhoods, Spatial Analysis, Transport Policy, Sustainable city.



Dr. Güney Celbiş Mehmet, Associate professor at ENTPE and Research Associate at LAET - Transport Urban Planning Economics Laboratory, ENTPE, CNRS, University of Lyon.

Topics: Tree-based machine learning models, Socioeconomic analysis, Urban Mobility, Machine learning tools.



Dr. Isabel Cunha, Head of the MSc in Mobility Management and Assistant Professor at ENTPE and Research Associate at LAET - Transport Urban Planning Economics Laboratory, ENTPE, CNRS, University of Lyon.

Topics: Mobility Management, Behaviour Change, Active Travel, Planning Support System Tools, Accessibility, Mobility Justice and the 15-Minute City.



Dr. Nour-Eddin El Faouzi, Full professor (HDR) at Gustave Eiffel University – LICIT ECO-7 Lab - Transport and Traffic Engineering Laboratory, and ENTPE.  
Topics: Civil Engineering, Transport Engineering, Statistics, Algorithms, Data Machine learning.



Dr. Cyrille François, Associate Professor at ENTPE and Researcher at LAET - Transport Urban Planning Economics Laboratory, ENTPE, CNRS, University of Lyon.  
Topics: Daily mobility, Environmental assessment, Transport and mobility model, Life Cycle Analysis, Eco-design of mobility.



Dr. Pierre-Antoine Laharotte, Researcher at Gustave Eiffel University – LICIT ECO-7 Lab - Transport and Traffic Engineering Laboratory, and ENTPE.

Topics: Statistical Learning, Intelligent Transportation Systems, Machine Learning



Dr. Mathieu Gardrat, CNRS Senior Researcher at ENTPE and LAET - Transport Urban Planning Economics Laboratory, ENTPE, CNRS, University of Lyon.

Topics: Urban logistics, Serious Games, urban mobility modelling.



Dr. Jean-Pierre Nicolas, CNRS Top-Grade Researcher (HDR) at ENTPE and LAET - Transport Urban Planning Economics Laboratory, ENTPE, CNRS, University of Lyon.

Topics: Urban & Transport Studies, Assessment of public policies, Sustainable development.



Dr. Mariana Reyes, R&D Researcher in Transport Economics and Territorial Planning at VEDECOM Research Institute.

Topics: Sustainable mobility, Active mobility, Urban planning, Governance, Mobility ecosystems, Mobility management.



Dr Alexandra Sandu, Research Officer at LSE - London School of Economics and Political Science. Topics: Spatial planning, Spatial Analysis & GIS, Urban & Regional development, Mobility & governance, Post-socialist cities.

---

## **/// Career prospects**

Graduates with the ENTPE MSc in Mobility Management are equipped with a unique blend of technical, analytical, and managerial skills. Below are some of the key employment sectors.



Government agencies & local authorities



Tech companies in smart mobility



Urban Planning and transport consultancy firms



Private transport and infrastructure companies



International organisations focused on sustainable development



NGOs and environmental organisations



Research Institutes & Tertiary Education sector



Entrepreneurship and transport management

>> Download the MSc Programme Mobility Management career pathways

The programme is endorsed by several international organisations, including urban and transport planning consultancy firms, engineering and infrastructure companies, NGOs, and High-Tech companies in smart mobility, as described in our brochure. These companies will actively participate in the training programme through guest lectures, seminars and workshops.

## /// Entry requirements

- A higher education degree (minimum 240 ECTS or equivalent) in civil engineering, urban planning, economics, geography, management, or a related field.
- Two or more years of professional experience.
- English language\* proficiency equivalent to C1 level achieving the minimum required scores in the following internationally recognised English tests:
  - IELTS Academic (Overall score of 7.0)
  - TOEFL IBT (Overall score of 95)
  - TOEIC (Overall score of 945)
  - Cambridge CAE (Overall score of 180)
  - PTE Academic (Overall score of 76)

*\*Applicants holding a B2 level are eligible for admission, provided that they enrol in elective language courses at ENTPE.*

*\*Applicants with a higher education degree taught entirely in English do not need to provide an English language certificate.*

## **/// Application\***

- Curriculum Vitae (max. two pages A4)
- Cover letter (max. 1 Page A4)
- Higher education degree certificate
- Transcript of records
- Proof of English proficiency\*\*
- Letter of Recommendation (optional)
- Proof of relevant work experience
- Interview with shortlisted candidates

*\* All documents should be written or translated into English. \*\*Applicants with a higher education degree taught entirely in English do not need to provide an English language certificate.*

## **Application procedures and Deadlines**

### **2nd admission round - deadline June 30th, 2026**

- **Non-EU/non-EEA students:** applications must be submitted via the international.student@entpe.fr and isabel.cunha@entpe.fr
- **EU/EEA/Swiss students:** applications must be submitted to international.student@entpe.fr and isabel.cunha@entpe.fr

## **/// Tuition fees\***

2026-2027 EU and Non-EU citizen Normal fee: 14 000 €

*\*Tuition fee reduction based on academic excellence, financial need and social inclusion criteria.*